



James Gettys Elementary School

Gettysburg Area School District

Mr. Ted Wells
Principal

Dear James Gettys Elementary and Gettysburg Community,

At James Gettys Elementary School, we are focused on transparency of our data, student achievement and growth. As a result, we wanted to share our students' Acadience Reading and Math Composite data from the middle of the school year.

In the coming weeks our teachers and staff will meet collaboratively with specialists to analyze this data. We will look for areas in which we are excelling and other areas that are in need of improvement. This will result in specific changes to our whole group, small group, intervention, and enrichment instruction in order to successfully reach our goals stated below. If you have any further questions about our data and our process, please contact me at your convenience.

2022-2023 Acadience Reading Goal

Using the Acadience tool, 80% of students at James Gettys Elementary will achieve typical or above typical growth on their reading composite measure.

2022-2023 Acadience Math Goal

Using the Acadience tool, 80% of students at James Gettys Elementary will achieve typical or above typical growth on their math composite measure.

What is Acadience?

Acadience is a universal screening and progress monitoring tool that measures the acquisition of early literacy and mathematical skills.

What is a Reading Composite Score?

The Reading Composite Score is a combination of multiple Reading scores and provides the best overall estimate of early literacy and reading proficiency.

What is a Math Composite Score?

The Math Composite Score is a combination of multiple Acadience math scores and provides the best estimate of a student's overall math skill.

Sincerely,

Mr. Ted Wells

Principal
James Gettys Elementary School
898 Biglerville Rd
Gettysburg, PA 17325-2696
717.334.6254 option 5

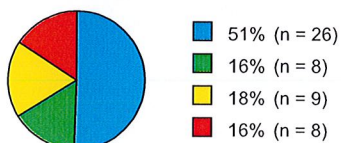
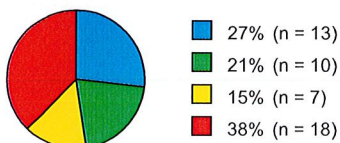
Status Report

Acadience Reading K-6 End of Year Reading Composite Score

Beginning of Year Reading Composite Score

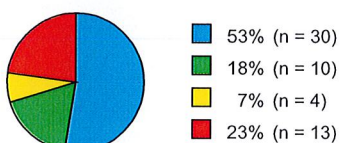
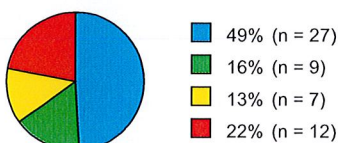
Middle of Year Reading Composite Score

Kindergarten



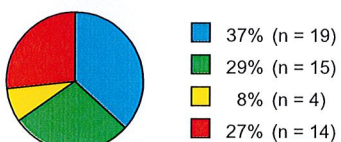
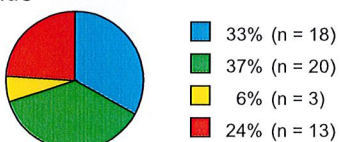
Not tested yet.

First Grade



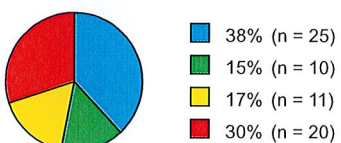
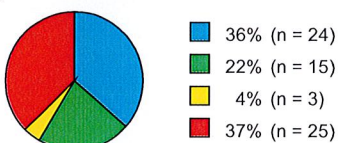
Not tested yet.

Second Grade



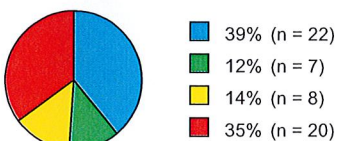
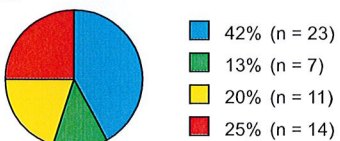
Not tested yet.

Third Grade



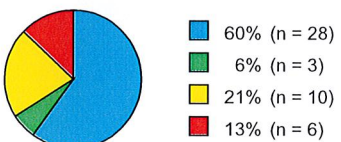
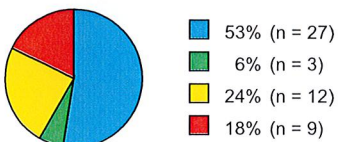
Not tested yet.

Fourth Grade







Not tested yet.

Fifth Grade



Not tested yet.

Status	Score Level	Likely Need For Support
	Above Benchmark	Likely to Need Core Support
	At Benchmark	Likely to Need Core Support
	Below Benchmark	Likely to Need Strategic Support
	Well Below Benchmark	Likely to Need Intensive Support

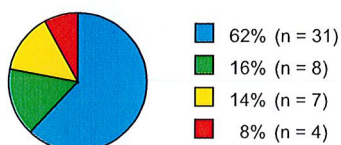
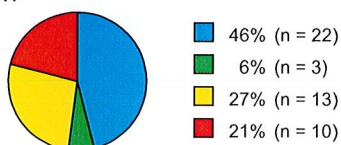
Status Report

Acadience Math End of Year Math Composite Score

Beginning of Year Math Composite Score

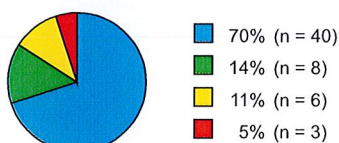
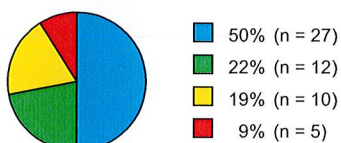
Middle of Year Math Composite Score

Kindergarten



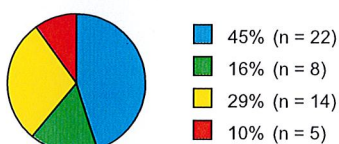
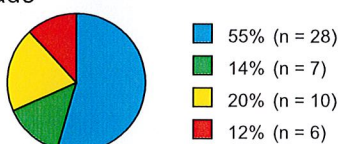
Not tested yet.

First Grade



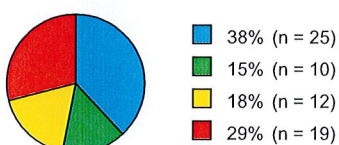
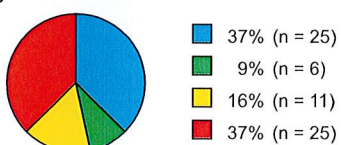
Not tested yet.

Second Grade



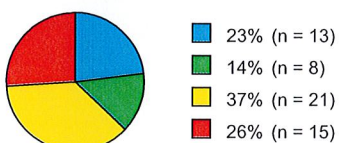
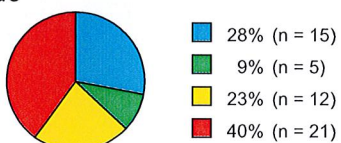
Not tested yet.

Third Grade



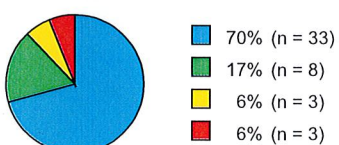
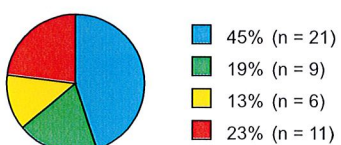
Not tested yet.

Fourth Grade







Not tested yet.

Fifth Grade



Not tested yet.

Status	Score Level	Likely Need For Support
	Above Benchmark	Likely to Need Core Support
	At Benchmark	Likely to Need Core Support
	Below Benchmark	Likely to Need Strategic Support
	Well Below Benchmark	Likely to Need Intensive Support